



GMT MONTHLY MEMBERSHIP PROGRESS REPORT

Results as of: 6/30/2020

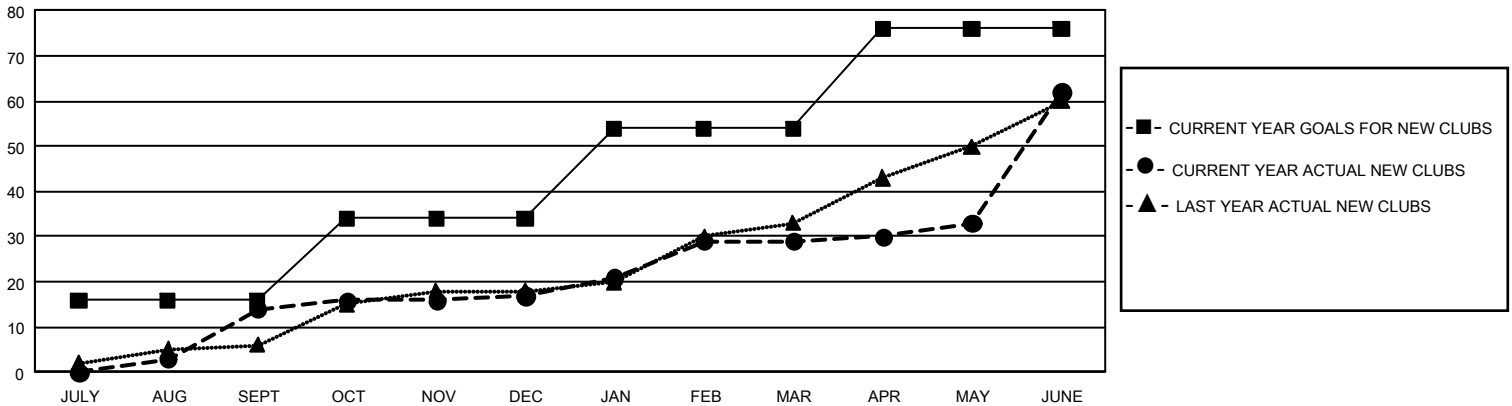
GMT Constitutional Area 5 - E, Group O

GMT: OPEN

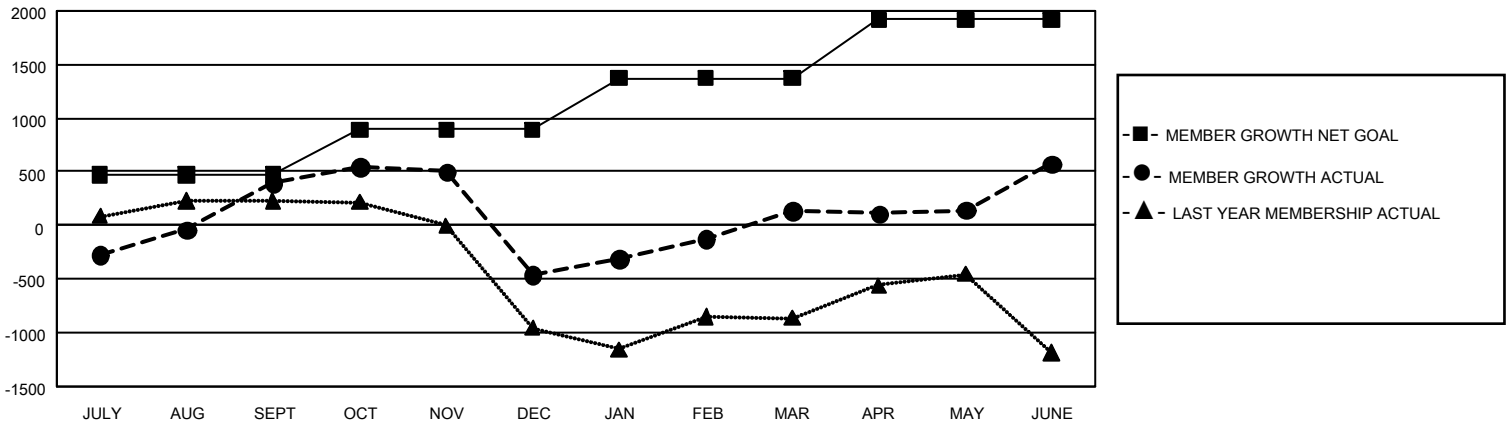
REPORT DOES NOT INCLUDE CLUBS IN UNDISTRICTED AREAS.

Clubs				Members			
RESULTS FOR 2019-2020				RESULTS FOR 2019-2020			
QUARTER	NEW CLUB GOAL	NEW CLUBS	DROPPED CLUBS	QUARTER	MEMBER GROWTH NET GOAL	MEMBER GROWTH ACTUAL	DROPPED MEMBERS ACTUAL (including transfers)
JULY/AUG/SEPT	48	14	18	JULY/AUG/SEPT	1,410	1,441	917
OCT/NOV/DEC	54	3	16	OCT/NOV/DEC	1,275	732	1,559
JAN/FEB/MAR	60	12	4	JAN/FEB/MAR	1,440	1,683	591
APR/MAY/JUNE	66	33	0	APR/MAY/JUNE	1,635	1,503	891

GOALS AND ACTUAL NEW CLUBS CUMULATIVE



GOALS AND ACTUAL MEMBERS CUMULATIVE



DROPPED CLUBS: 38	482 CLUBS OF 710 ADDED 1 OR MORE NEW MEMBERS	GENDER DISTRIBUTION MALE 11,570 (51.75%) FEMALE 10,789 (48.25%)
DROPPED MEMBERS DECEASED 87 CLUB CANCELLED 891 OTHER 2,964 TOTAL 3,942	CLICK HERE FOR CUMULATIVE MEMBERSHIP DATA	TOTAL FAMILY UNIT MEMBERS 7,788 FAMILY MEMBERS PAYING HALF DUES 4,769